

Air Cooled Shakers

V35

- Peak Sine Force 35kN
- Random Force rms 35kN
- Velocity peak 1.8m/s
- Frequency range 3kHz
- Max Payload 600kg
- Displacement 51mm
- Choice of tables 640mm
440mm
or 340mm



V53

- Peak Sine Force 53kN
 - Random Force rms 53kN
 - Velocity peak 1.8m/s
 - Frequency range 2.5kHz
 - Max Payload 750kg
 - Displacement 51mm
 - Choice of tables 640mm
440mm
-
- Vertical isolation mounts
 - Isolated trunnions
 - Monobase with slip tables
 - Air glides and guidance systems



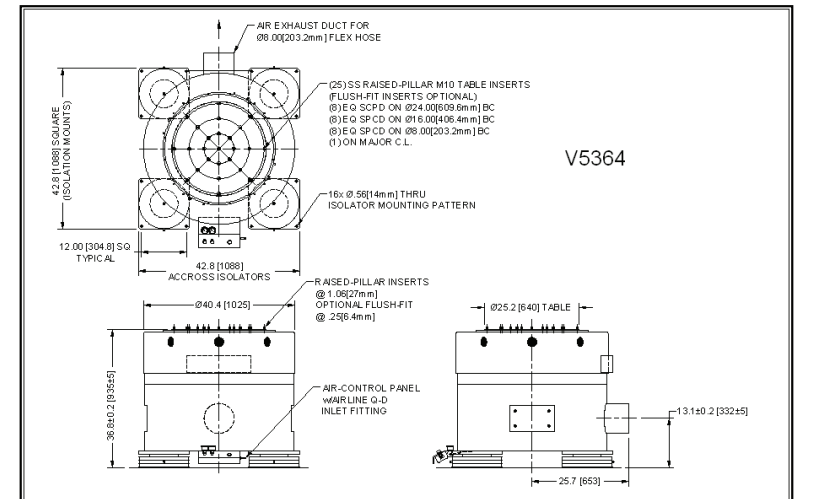
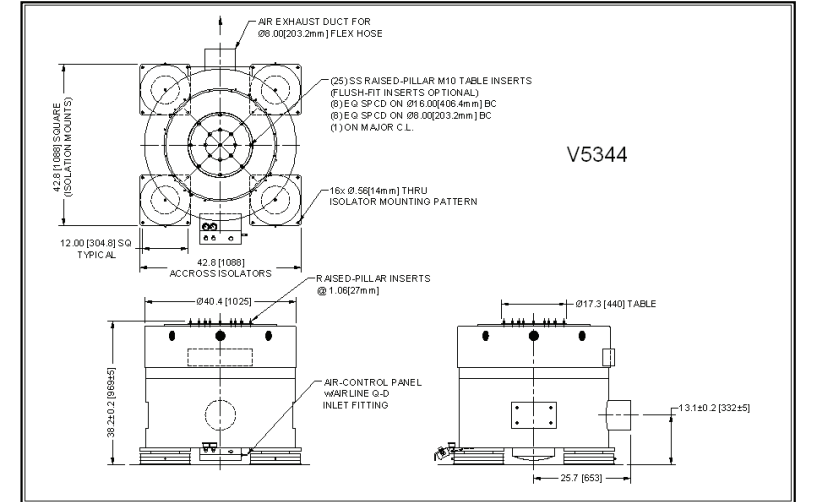
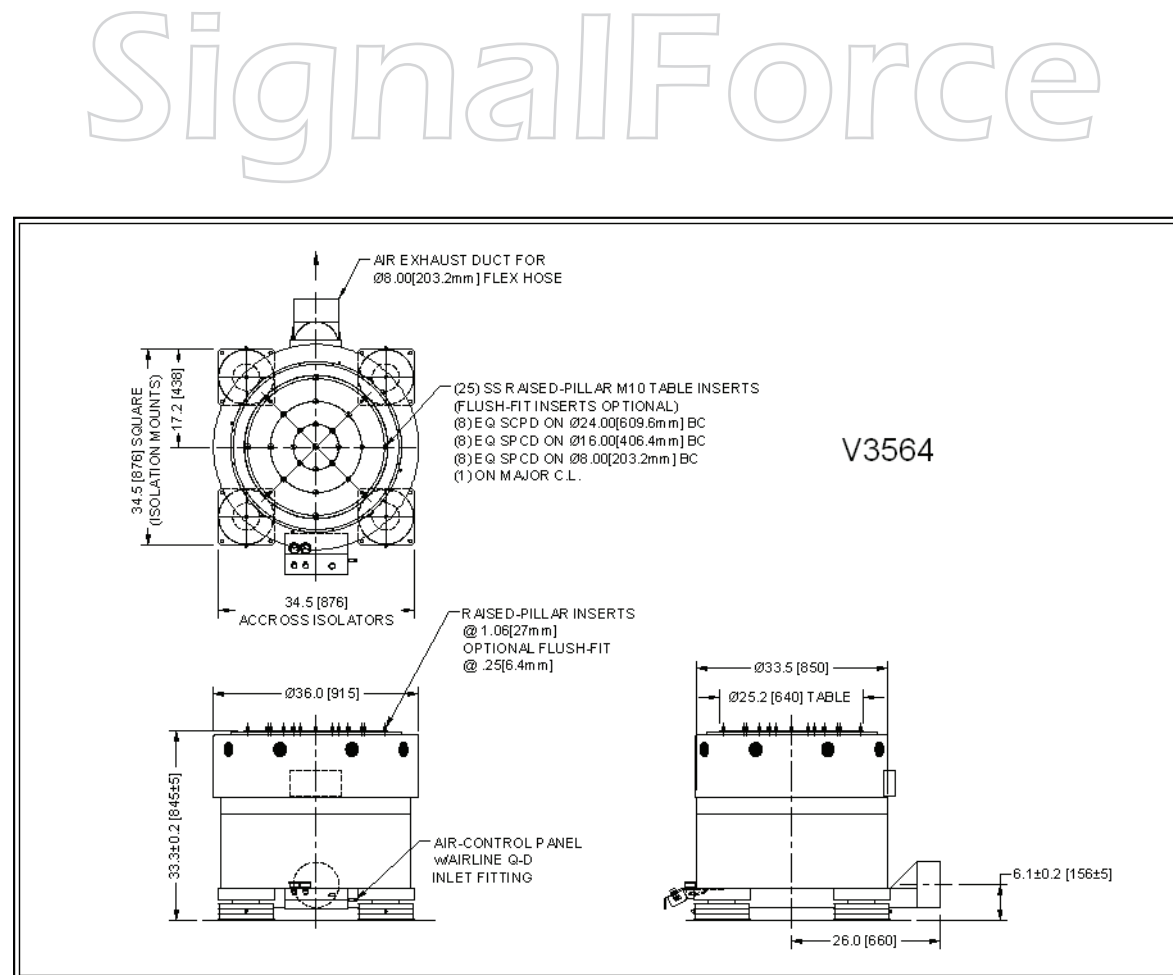
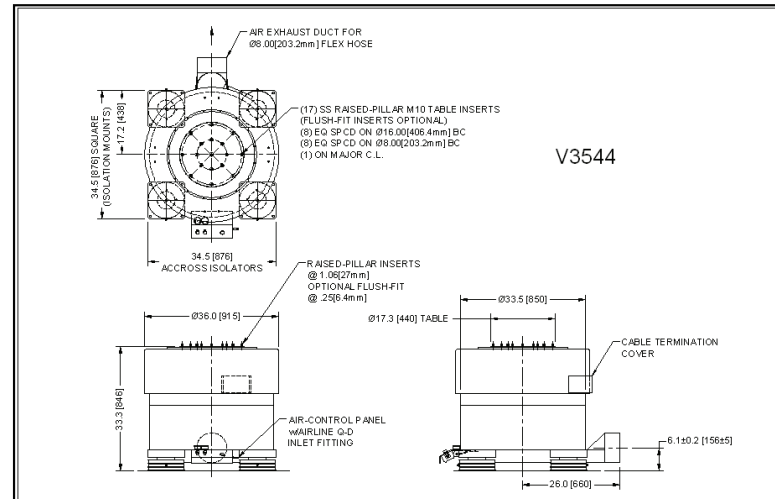
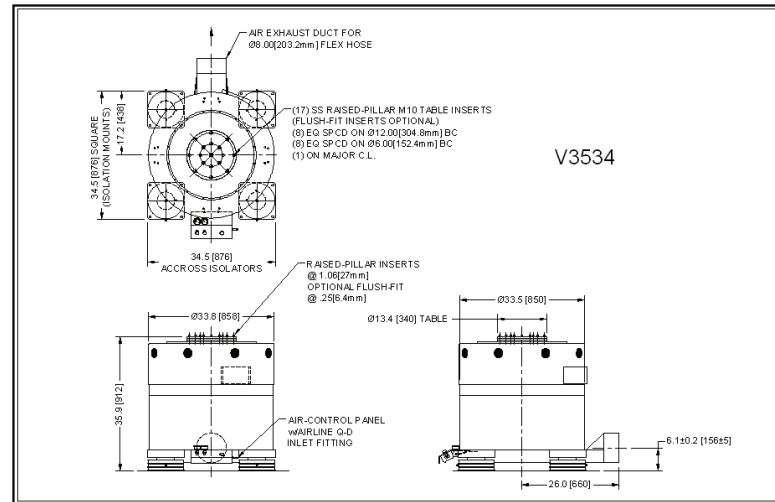
The V35 utilizes many features from the highly successful and reliable V26 series, to create an efficient and dependable shaker. The V35 offers a choice of three table sizes: 340mm and 440mm for high acceleration testing and 640mm for production testing. Both versions use rigid table designs to provide high quality dynamic performance. Other features include: automatic armature centering, economy field supply, vertical isolation mounts, isolated trunnions, air glides, chamber interfaces and monobase systems for three axis testing.

The V53 is a high performance shaker offering good control capabilities at frequencies in excess of 2500Hz. The V53 offers a choice of two table sizes: 440mm for high acceleration testing and 640mm for production testing. Both versions use rigid table designs to provide high quality dynamic performance. Other features include: automatic armature centering, vertical isolation mounts, isolated trunnions, air glides, chamber interface and monobase systems for three axis testing.

SignalForce
Shakers

	Maximum Sine Force			Maximum Random Force			Maximum Shock Force*			Maximum Acceleration (Sine)		Maximum Velocity		Rated Travel Peak to Peak		Armature Diameter		Armature Mass		Insert Threads		Armature Resonance $\pm 5\%$	Frequency Range		Static Payload Support- Axial Stiffness		Stray Magnetic Field @ 25 mm above table	Shaker Body Mass		Heat Dissipation			Acoustic Noise @ 1m		Electrical Power Consumption	
	lbf	N	kgf	lbf	N	kgf	lbf	N	kgf	g	m/s ²	ips	mps	in.	mm	in.	mm	lbs.	kg	SAE	Metric		Min	Max	lbs	kg		mT	Gauss	lbs.	kg	Shaker	Amplifier	Blower		Amplifier
V3534/DSA4-32K	8000	35585	3629	8000	35585	3629	16960	75440	7693	113	1105	71	1.8	2.0	51	13.4	340	71	32	3/8-16	M10	2000	DC	3000	1323	600	<3	30.0	4034	1830	0.9	4.2	21.4	66	88	51.3
V3544/DSA4-32k	8000	35585	3629	8000	35585	3629	16960	75440	7693	91	890	71	1.8	2.0	51	17.3	440	88	40	3/8-16	M10	2300	DC	3000	1323	600	<3	30.0	4034	1830	0.9	4.2	21.4	66	88	51.3
V3564/DSA4-32k	8000	35585	3629	8000	35585	3629	16960	75440	7693	53	523	71	1.8	2.0	51	25.2	640	68	3/8-16	M10	2500	DC	3000	1323	600	<3	30.0	4034	1830	0.9	4.2	21.4	66	88	51.3	
V5344/DSA4-32k	7868	35000	3569	7194	32000	3263	16681	74200	7566	56	547	71	1.8	2.5	63.5	17.3	440	141	64	3/8-16	M10	2200	DC	3000	1653	750	<3	30.0	6614	3000	1.5	5.8	30.6	72	98	58.3
V5344/DSA4-40k	9999	44480	4536	9999	44480	4536	21199	94298	9616	71	695	71	1.8	2.5	63.5	17.3	440	141	64	3/8-16	M10	2200	DC	3000	1653	750	<3	30.0	6614	3000	1.5	5.8	30.6	72	98	64.7
V5344/DSA4-48k	12000	53378	5443	12000	53378	5443	25440	113161	11539	85	834	71	1.8	2.5	63.5	17.3	440	141	64	3/8-16	M10	2200	DC	3000	1653	750	<3	30.0	6614	3000	1.5	5.8	30.6	72	98	71.2
V5364/DSA4-32k	7868	35000	3569	7194	32000	3263	16681	74200	7566	44	432	71	1.8	2.5	63.5	25.2	640	179	81	3/8-16	M10	2200	DC	3000	1653	750	<3	30.0	6614	3000	1.5	5.8	30.6	72	98	58.3
V5364/DSA4-40k	10000	44480	4536	10000	44480	4536	30000	94298	9616	56	549	71	1.8	2.5	63.5	25.2	640	179	81	3/8-16	M10	2200	DC	3000	1653	750	<3	30.0	6614	3000	1.5	5.8	30.6	72	98	64.7
V5364/DSA4-48k	12000	53378	5443	12000	53378	5443	25440	113161	11539	67	659	71	1.8	2.5	63.5	25.2	640	179	81	3/8-16	M10	2200	DC	3000	1653	750	<3	30.0	6614	3000	1.5	5.8	30.6	72	98	71.2

*Note- At 3 mSec



SignalForce

Options

- Air isolated mounts for vertical testing only. Resonance below 5Hz
- Rubber isolation mountings for vertical only testing. Resonance below 5Hz
- Fully isolated trunnions to support both vertical and horizontal testing. Resonance below 5Hz
- Air glides to provide mobility when shakers are used in conjunction with climatic chambers.
- V-groove wheels and rails to provide accurate guidance below chambers.
- Monobase systems to provide three axis testing with slip tables
- Motorized guidance to accurately maneuver monobase systems below chambers.
- Head expanders
- Fixtures
- Thermal barriers
- Acoustic enclosures
- Weatherproof enclosures for cooling blowers
- Economy field supply to reduce power consumption

Armature Insert Patterns

V35

Table Dia. mm	340	440	640
Center insert	1	1	1
152.4mm PCD	8	-	-
203.2mm OCD	-	8	8
304.8mm PCD	8	-	-
406.4mm PCD	-	8	8
609.6mm PCD	-	-	8

V53

Table Dia. mm	440	640
Center insert	1	1
203.2mm OCD	8	8
406.4mm PCD	8	8
609.6mm PCD	-	8

Alternative patterns may be supplied on request



Discover more at www.dataphysics.com

Data Physics Corporation

1741 Technology Drive, Suite 260, San Jose, CA 95110
 TEL: (408) 437-0100 FAX: (408) 437-0509

